

**Lawrence Pray Homes**

10 Folsom Avenue North Cape May, NJ



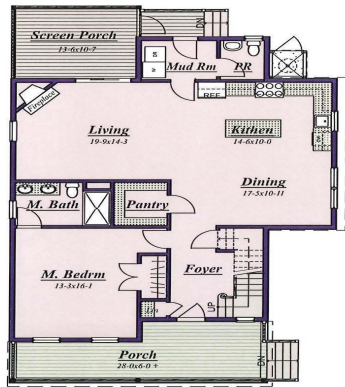
Front Elevation

**Floor Areas**

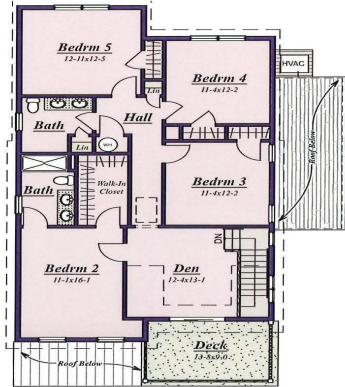
1st Floor	1,285
2nd Floor	1,269
Total	2,554



Priced at  
**\$1,929,000**



1st Floor Plan

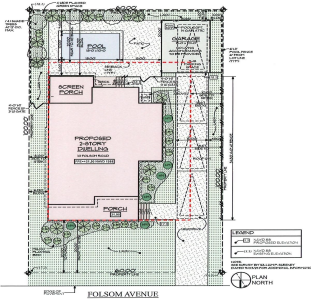


2nd Floor Plan

**FENWICK ARCHITECTS**  
© 2025 Fenwick Architects

**Lawrence Pray Homes**

10 Folsom Avenue North Cape May, NJ



Plot Plan

**FENWICK ARCHITECTS**  
© 2025 Fenwick Architects

**About the Property**

New construction with in-ground pool, just steps away from the Delaware Bay offering picturesque water views! Enjoy this custom built, beautifully designed home, offering an open concept first floor featuring a gorgeous living room, dining area, and kitchen. The living room centers around a cozy gas fireplace leading out to the screened back porch, while a stunning kitchen provides top of the line SS appliances, an island with a beverage cooler and sink, walk-in pantry, and an expansive dining area. The highly desirable first floor primary suite includes a private en suite bath. The main level also features a powder room and a convenient mudroom laundry room with a washer and dryer. Upstairs, you ll find a versatile den, second primary bedroom with en suite bath and walk-in closet, three ...

**Features**

- 3 Bathroom
- Patio
- Porch
- Outside Shower
- Sprinkler System
- Dining Room
- 5 Bedroom
- Deck
- Screened Porch
- In Ground Pool
- Living Room
- Kitchen

**Give me a call!**

[www.monihan.com](http://www.monihan.com)