

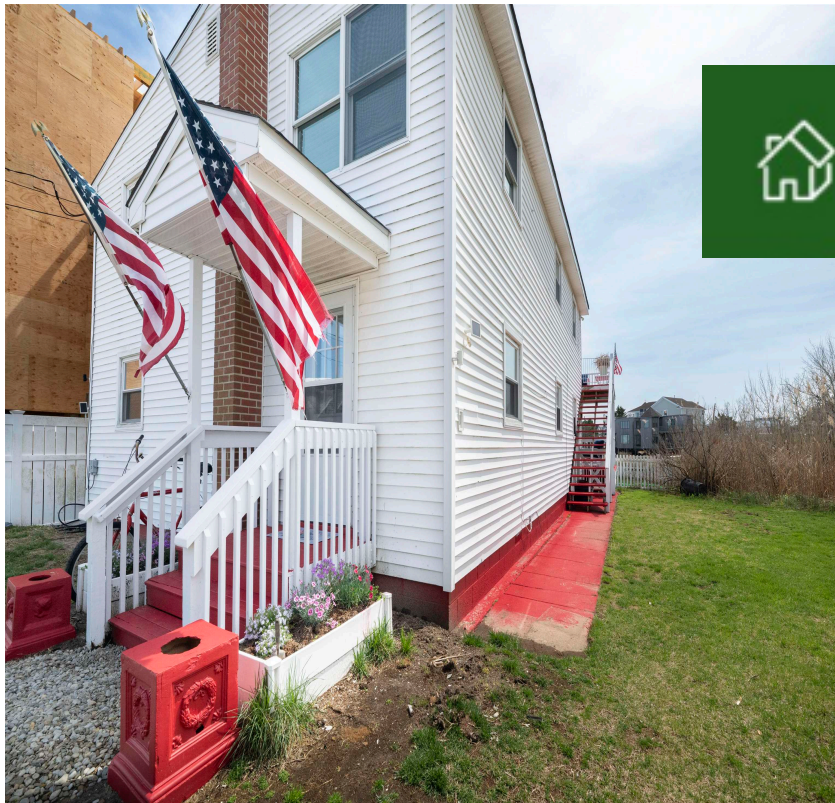


Priced at

\$1,995,000

About the Property

Unique opportunity and a rare offering of this single family home located on highly desirable Yacht Avenue in Cape May's marina district overlooking the Cape May Harbor at Devil's Reach. With 2,593 square feet of interior living space the upside-down layout takes advantage of the breathtaking views of the Cape May Harbor. Open layout with water views from every window in the home. Prepare yourself for the best views with unforgettable sunrises and sunsets. Close to everything the area has to offer beaches, boating, shopping and some of the best restaurants in the state.



Features

- 2 Bathroom
- Deck
- Cable TV
- Kitchen
- Dining Area
- See Remarks
- 5 Bedroom
- Porch
- Living Room
- Recreation/Family
- Storage Attic
- 1st Floor Primary Bedroom

Give me a call!

www.monihan.com