

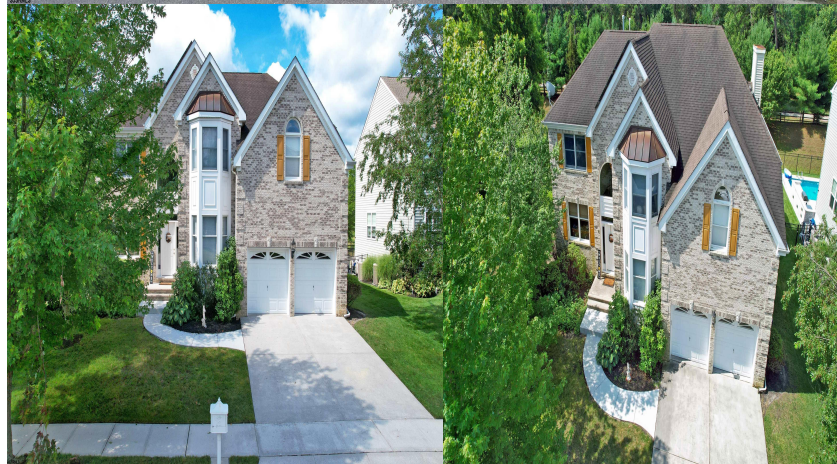
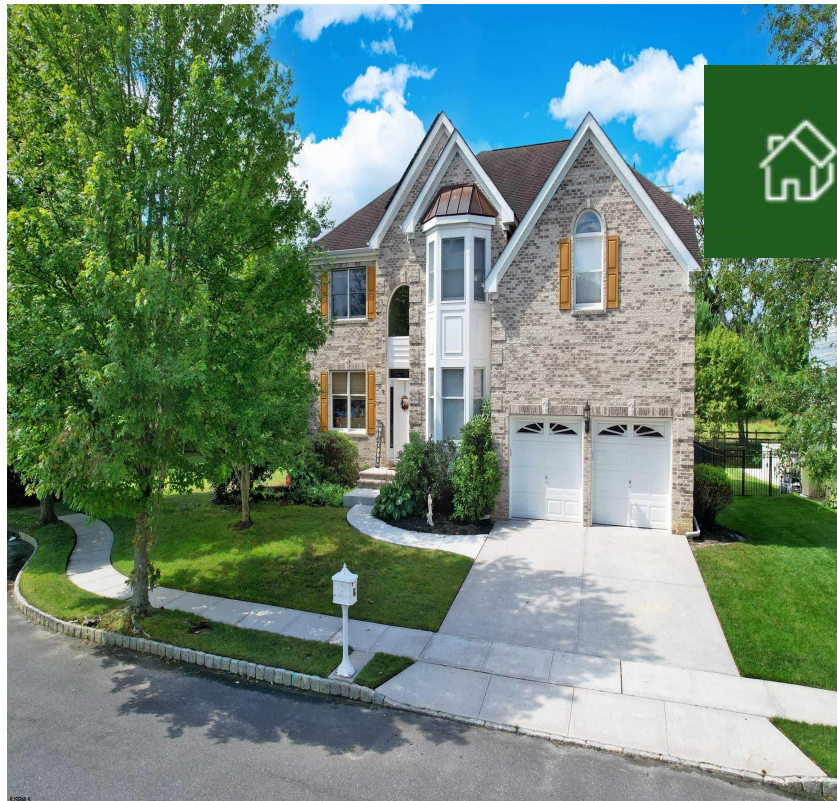


Priced at

\$645,000

## About the Property

Come in and enjoy the comfort and charm this wonderful home has to offer. Situated in the private community of "Glen Eyre at Mays Landing" You are graciously greeted with an open two story foyer which is accented by a gorgeous wrought-iron staircase. There are numerous quality upgraded features throughout; Anderson winds/doors, custom window treatments, wainscoting, custom lighting. Gleaming hardwood floors through most of the home. A sunken family/entertainment room featuring a dramatic 18' ceiling heights encased with a full wall of windows, built in gas fireplace. A beautifully designed kitchen with granite counter tops, stainless steel appliances, tons of cabinetry and pantry space. All rooms are spacious offering a generous size dining room and formal living room, a convenient 1st fl ...



## Features

- 2 Bathroom
- 4 Bedroom
- Curbs
- Fenced Yard
- Patio
- Paved Road
- Pool-Above Ground
- Sidewalks
- Sprinkler System
- Dining Room
- Eat In Kitchen
- Laundry/Utility Room

Give me a call!

[www.monihan.com](http://www.monihan.com)