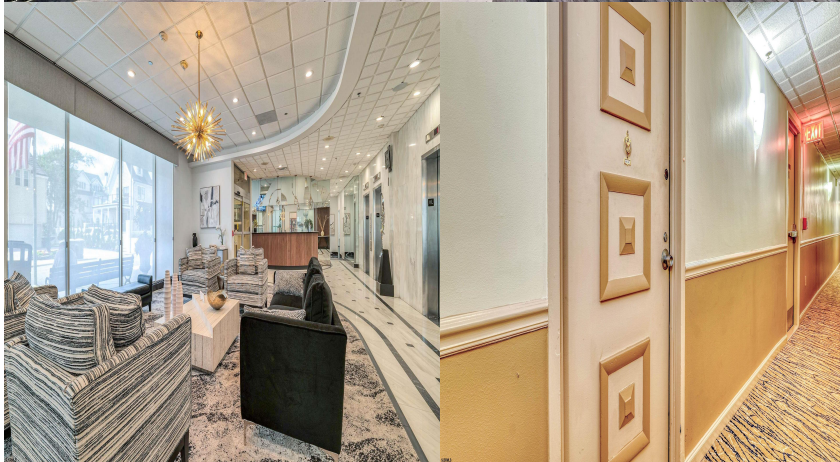




Priced at
\$334,990

About the Property

Perched on the top 14th floor of the prestigious Plaza Condominiums, Unit 1412 offers a spacious 1-bedroom, 1-bath apartment situated in the desirable Lower Chelsea neighborhood, right on the border of Ventnor. This charming quiet coastal unit recently underwent a total renovation from top to bottom. The kitchen features new cabinets, granite counter tops/backsplash, and stainless steel appliances that will make any chef proud. All new flooring, and a newly designed bathroom with a step in shower. All utilities: Electric, Heat, Air Conditioning, Gas, Water and Sewer, cable TV are included in the condo dues. Also included is our saltwater pool, whirlpool, sun deck, state-of-the-art gym, large social room and Lobby. Lastly, rest assure, in house management and 24 hour security are also in ...



Features

- 1 Bathroom
- Dishwasher
- Gas Stove
- Refrigerator
- Heat Fuel:Forced Air
- Water Heater:Gas
- 1 Bedroom
- Disposal
- Microwave
- Self Cleaning Oven
- Heat Fuel:Multi-Zoned
- Multi-Zoned

Give me a call!

www.monihan.com